

# **PRAIRIE CHICKEN & SHARP-TAILED GROUSE**

Historically, these two species, plus ruffed grouse, have been combined under the name "Prairie Grouse." In these reports, harvest estimates for these species were combined. In 2006, hunters were asked specifically how many of each species were harvested of the total harvest and 76% were identified as sharp-tailed grouse, 20% as prairie chickens, and 4% were unknown. They continue to be combined for the overall harvest estimates in this report.

The 2023 grouse season covered 16 September 2023 – 7 January 2024 statewide. Harvest surveys were sent to both resident and nonresident hunters. The daily limit was 3 birds, possession 15. To hunt grouse residents required to hold small game, 1-day small game, adult or senior combination, or youth small game licenses; nonresidents were required to obtain adult or youth small game or nonresident shooting preserve licenses. Harvest surveys were sent to both resident and nonresident hunters. No shooting preserve license holders were surveyed and none of their harvest is included in any of the data in this report.

In 2023, there were 84,610 resident and 81,380 nonresident licenses issued that allowed holders to hunt grouse. Approximately 15,000 residents and 15,000 nonresidents were surveyed for the upland bird seasons. Survey response rates were 28% for residents and 29% for nonresidents.

Based on survey responses indicating at least one day of hunting grouse, there were a projected 9,617 resident and 7,567 nonresident grouse hunters. A projected total of 69,443 grouse were harvested (46,228 by residents, 23,214 by nonresidents) during the 2023 season.

When asked their satisfaction on the season, (1 being very dissatisfied, and 7 being very satisfied), resident upland bird hunters reported an average rating of 5.03 while nonresidents reported a rating of 5.72.

## Comparison of the 2014 - 2023 prairie grouse season statistics

Year	Residents					Nonresidents				
	Hunters	Harvest	Ave Day Hunted	Ave Bag	Satisfaction	Hunters	Harvest	Ave Day Hunted	Ave Bag	Satisfaction
2014	6,503	25,847	4.55	4.01	4.85	4,254	9,943	3.99	2.31	5.52
2015	7,866	34,506	4.72	4.40	4.98	5,032	15,388	4.05	3.08	5.49
2016	7,199	31,611	4.88	4.40	4.72	5,203	11,294	4.04	2.18	5.43
2017	5,703	15,863	4.57	2.80	4.23	3,645	6,290	3.81	1.73	5.06
2018	5,868	16,431	4.36	2.83	4.64	3,979	7,429	4.08	1.87	5.38
2019	5,583	18,601	4.45	3.33	4.67	4,637	11,452	3.74	2.47	5.28
2020	10,487	48,947	5.14	4.78	5.06	6,389	18,314	4.33	2.88	5.75
2021	8,680	36,583	5.55	4.28	4.75	6,597	16,636	4.22	2.53	5.38
2022	9,149	40,263	5.53	4.46	5.09	7,616	23,354	3.97	3.10	5.85
2023	9,617	46,228	5.80	4.78	5.03	7,567	23,214	4.04	3.10	5.72

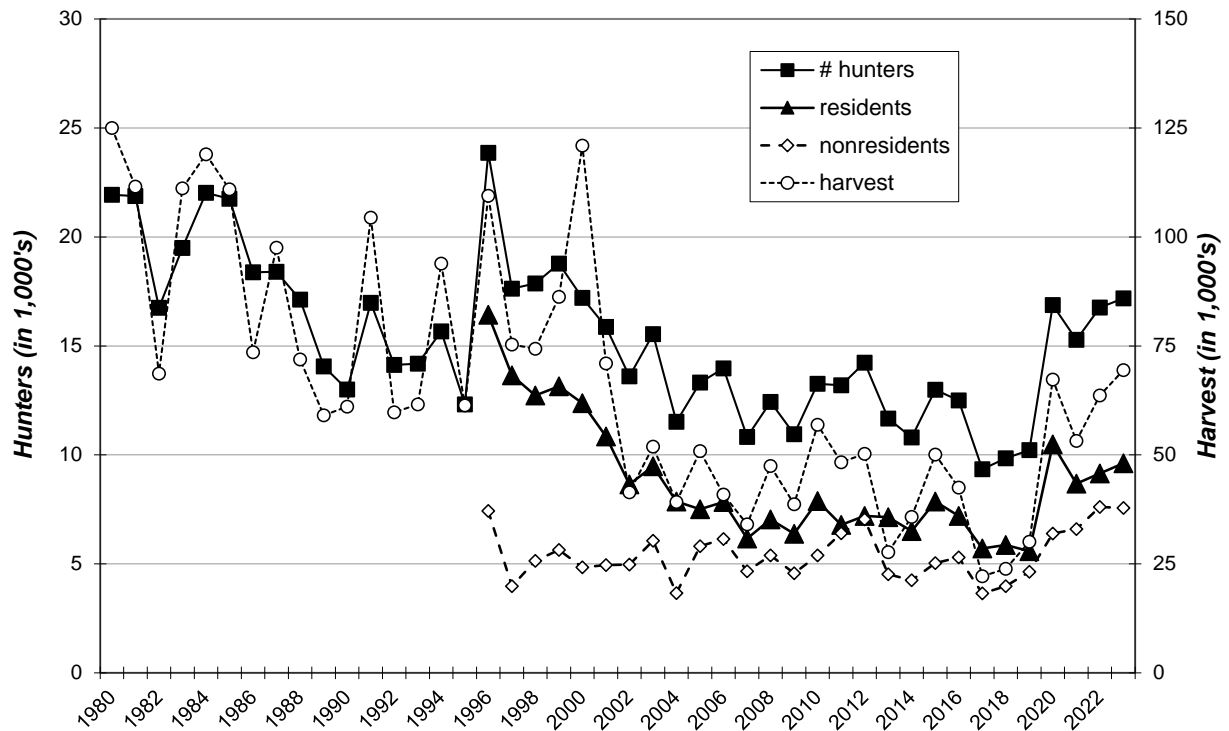
## PRAIRIE GROUSE HARVEST PROJECTIONS FOR 2023

Revised:  
4/11/2024

	RESIDENT TOTALS BY LICENSE TYPE					NONRESIDENT TOTALS		
	Combo	Senior Combo	Small Game	Youth SmGm	Sum Estimates	Nonres Sm Game	Youth Sm Game	Sum Estimates
<b>Licenses Sold</b>	46,849	11,549	20,154	6,058	<b>84,610</b>	78,120	3,260	<b>81,380</b>
<b>Projected ACTIVE UPLAND BIRD HUNTERS</b>	<b>30,541</b>	<b>6,554</b>	<b>15,612</b>	<b>4,775</b>	<b>57,482</b>	<b>74,982</b>	<b>2,984</b>	<b>77,966</b>
Number Sampled by Survey	8,586	1,952	3,391	1,055	<b>14,984</b>	14,439	552	<b>14,991</b>
Number Responded to Survey	2,482	844	639	203	<b>4,168</b>	4,292	70	<b>4,362</b>
% Responded and Participated in Season	65%	57%	77%	79%	<b>66%</b>	98%	93%	<b>98%</b>
Responded and Participated in Season	1,618	479	495	160	<b>2,752</b>	4,206	65	<b>4,271</b>
Responded but DID NOT HUNT	864	365	144	43	<b>1,416</b>	86	5	<b>91</b>
<b>Survey Response Rate</b>	<b>28.9%</b>	<b>43.2%</b>	<b>18.8%</b>	<b>19.2%</b>	<b>27.8%</b>	<b>29.7%</b>	<b>12.7%</b>	<b>29.1%</b>
No. Hunters Reporting Prairie Grouse Days	313	94	56	22	<b>485</b>	409	6	<b>415</b>
Sum Prairie Grouse Hunted Days	1,831	552	329	101	<b>2,813</b>	1,646	29	<b>1,675</b>
Average Days Hunted Prairie Grouse	<b>5.85</b>	<b>5.87</b>	<b>5.88</b>	<b>4.59</b>	<b>5.80</b>	<b>4.02</b>	<b>4.83</b>	<b>4.04</b>
Sum Prairie Grouse Bagged	1,662	320	266	70	<b>2,318</b>	1,279	9	<b>1,288</b>
Average Season Prairie Grouse Bag	<b>5.31</b>	<b>3.40</b>	<b>4.75</b>	<b>3.18</b>	<b>4.78</b>	<b>3.13</b>	<b>1.50</b>	<b>3.10</b>
<b>Projected Days Prairie Grouse Hunting</b>	<b>34,561</b>	<b>7,553</b>	<b>10,377</b>	<b>3,014</b>	<b>55,505</b>	<b>29,344</b>	<b>1,332</b>	<b>30,675</b>
<b>Projected No. Prairie Grouse Hunters</b>	<b>5,908</b>	<b>1,286</b>	<b>1,766</b>	<b>657</b>	<b>9,617</b>	<b>7,291</b>	<b>275</b>	<b>7,567</b>
<b>Projected Prairie Grouse Bag</b>	<b>31,371</b>	<b>4,379</b>	<b>8,390</b>	<b>2,089</b>	<b>46,228</b>	<b>22,801</b>	<b>413</b>	<b>23,214</b>
					<b>TOTAL PRAIRIE GROUSE HARVEST =</b>	<b>69,443</b>		
<b>Upland Bird Hunters Mean Satisfaction Score *</b>	5.07	4.94	5.02	5.01	5.03	5.73	5.67	5.72

\* Based on scale of 1-7 with 1="very dissatisfied" and 7="very satisfied"

## PRAIRIE GROUSE HUNTERS & HARVEST 1980-2023



## Resident Grouse Harvest Distribution by County 2023

COUNTY	HUNTER DISTRIBUTION				HARVEST DISTRIBUTION				Birds/Hunter
	# Reported	# Projected	% of Total	# Proj w/ Unk *	# Reported	# Projected	% of Total	# Proj w/ Unk *	
Minnehaha	0	0	0.0	0	0	0	0.0	0	0
Pennington	23	456	5.0	479	155	3,091	7.1	3,290	6.8
Brown	1	20	0.2	21	0	0	0.0	0	0.0
Beadle	2	40	0.4	42	6	120	0.3	127	3.0
Codington	0	0	0.0	0	0	0	0.0	0	0
Brookings	0	0	0.0	0	0	0	0.0	0	0
Yankton	0	0	0.0	0	0	0	0.0	0	0
Davison	1	20	0.2	21	0	0	0.0	0	0.0
Lawrence	1	20	0.2	21	6	120	0.3	127	6.0
Aurora	1	20	0.2	21	0	0	0.0	0	0.0
Bennett	6	119	1.3	125	11	219	0.5	233	1.8
Bon Homme	1	20	0.2	21	10	199	0.5	212	10.1
Brule	10	198	2.2	208	7	140	0.3	149	0.7
Buffalo	3	59	0.6	62	8	160	0.4	170	2.7
Butte	11	218	2.4	229	68	1,356	3.1	1,443	6.2
Campbell	3	59	0.6	62	5	100	0.2	106	1.7
Charles Mix	10	198	2.2	208	17	339	0.8	361	1.7
Clark	1	20	0.2	21	4	80	0.2	85	4.0
Clay	1	20	0.2	21	0	0	0.0	0	0.0
Corson	14	278	3.0	291	69	1,376	3.2	1,465	5.0
Custer	2	40	0.4	42	2	40	0.1	42	1.0
Day	1	20	0.2	21	0	0	0.0	0	0.0
Deuel	1	20	0.2	21	0	0	0.0	0	0.0
Dewey	16	317	3.5	333	135	2,692	6.2	2,865	8.5
Douglas	1	20	0.2	21	2	40	0.1	42	2.0
Edmunds	2	40	0.4	42	7	140	0.3	149	3.5
Fall River	12	238	2.6	250	17	339	0.8	361	1.4
Faulk	2	40	0.4	42	4	80	0.2	85	2.0
Grant	7	139	1.5	146	7	140	0.3	149	1.0
Gregory	12	238	2.6	250	9	179	0.4	191	0.8
Haakon	20	397	4.3	416	89	1,775	4.1	1,889	4.5
Hamlin	0	0	0.0	0	0	0	0.0	0	0
Hand	5	99	1.1	104	5	100	0.2	106	1.0
Hanson	1	20	0.2	21	0	0	0.0	0	0.0
Harding	17	337	3.7	354	89	1,775	4.1	1,889	5.3
Hughes	10	198	2.2	208	43	858	2.0	913	4.3
Hutchinson	0	0	0.0	0	0	0	0.0	0	0
Hyde	5	99	1.1	104	25	499	1.1	531	5.0
Jackson	6	119	1.3	125	38	758	1.7	807	6.4
Jerauld	0	0	0.0	0	0	0	0.0	0	0
Jones	12	238	2.6	250	45	897	2.1	955	3.8
Kingsbury	0	0	0.0	0	0	0	0.0	0	0
Lake	0	0	0.0	0	0	0	0.0	0	0
Lincoln	0	0	0.0	0	0	0	0.0	0	0
Lyman	31	615	6.7	645	155	3,091	7.1	3,290	5.0
McCook	0	0	0.0	0	0	0	0.0	0	0
McPherson	10	198	2.2	208	31	618	1.4	658	3.1
Marshall	7	139	1.5	146	31	618	1.4	658	4.5
Meade	29	575	6.3	604	178	3,550	8.2	3,778	6.2
Mellette	7	139	1.5	146	22	439	1.0	467	3.2
Miner	0	0	0.0	0	0	0	0.0	0	0
Moody	0	0	0.0	0	0	0	0.0	0	0
Perkins	56	1,110	12.1	1,166	317	6,322	14.6	6,728	5.7
Potter	7	139	1.5	146	21	419	1.0	446	3.0
Roberts	4	79	0.9	83	11	219	0.5	233	2.8
Sanborn	0	0	0.0	0	0	0	0.0	0	0
Spink	0	0	0.0	0	0	0	0.0	0	0
Stanley	41	813	8.9	853	317	6,322	14.6	6,728	7.8
Sully	7	139	1.5	146	11	219	0.5	233	1.6
Tripp	14	278	3.0	291	75	1,496	3.4	1,592	5.4
Turner	0	0	0.0	0	0	0	0.0	0	0
Union	0	0	0.0	0	0	0	0.0	0	0
Walworth	8	159	1.7	167	3	60	0.1	64	0.4
Ziebach	15	297	3.2	312	100	1,994	4.6	2,123	6.7
Oglala Lakota	1	20	0.2	21	3	60	0.1	64	3.0
Todd	4	79	0.9	83	20	399	0.9	425	5.0
Unknown	23	456	-	-	140	2,792	-	-	6.1
<b>TOTALS:</b>	<b>485</b>	<b>9,617</b>	<b>100.0%</b>	<b>9,617</b>	<b>2,318</b>	<b>46,228</b>	<b>100%</b>	<b>46,228</b>	<b>4.81</b>

Last Revised: 6 May 2024

\* Includes unknown county projection values by assuming unknown county values are distributed the same as reported county values. Total values may be different due to rounding.

\*\* Calculation uses "#projected" values without correction for unknown/unreported county values.

## Nonresident Grouse Harvest Distribution by County 2023

COUNTY	HUNTER DISTRIBUTION				HARVEST DISTRIBUTION				Birds/Hunter
	# Reported	# Projected	% of Total	# Proj w/ Unk *	# Reported	# Projected	% of Total	# Proj w/ Unk *	
Minnehaha	0	0	0.0	0	0	0	0.0	0	0
Pennington	2	36	0.5	40	0	0	0.0	0	0.0
Brown	6	109	1.6	120	7	126	0.6	140	1.2
Beadle	3	55	0.8	60	5	90	0.4	100	1.6
Codington	1	18	0.3	20	0	0	0.0	0	0.0
Brookings	0	0	0.0	0	0	0	0.0	0	0
Yankton	0	0	0.0	0	0	0	0.0	0	0
Davison	2	36	0.5	40	0	0	0.0	0	0.0
Lawrence	1	18	0.3	20	3	54	0.3	60	3.0
Aurora	3	55	0.8	60	1	18	0.1	20	0.3
Bennett	5	91	1.3	100	4	72	0.3	80	0.8
Bon Homme	0	0	0.0	0	0	0	0.0	0	0
Brule	12	219	3.2	240	10	180	0.9	200	0.8
Buffalo	2	36	0.5	40	6	108	0.5	120	3.0
Butte	1	18	0.3	20	3	54	0.3	60	3.0
Campbell	4	73	1.1	80	6	108	0.5	120	1.5
Chas Mix	2	36	0.5	40	3	54	0.3	60	1.5
Clark	0	0	0.0	0	0	0	0.0	0	0
Clay	0	0	0.0	0	0	0	0.0	0	0
Corson	14	255	3.7	280	51	919	4.4	1,021	3.6
Custer	0	0	0.0	0	0	0	0.0	0	0
Day	1	18	0.3	20	0	0	0.0	0	0.0
Deuel	0	0	0.0	0	0	0	0.0	0	0
Dewey	15	274	4.0	300	83	1,496	7.2	1,661	5.5
Douglas	1	18	0.3	20	0	0	0.0	0	0.0
Edmunds	3	55	0.8	60	4	72	0.3	80	1.3
Fall River	0	0	0.0	0	0	0	0.0	0	0
Faulk	3	55	0.8	60	2	36	0.2	40	0.7
Grant	0	0	0.0	0	0	0	0.0	0	0
Gregory	7	128	1.9	140	2	36	0.2	40	0.3
Haakon	7	128	1.9	140	33	595	2.8	660	4.7
Hamlin	2	36	0.5	40	3	54	0.3	60	1.5
Hand	8	146	2.1	160	4	72	0.3	80	0.5
Hanson	0	0	0.0	0	0	0	0.0	0	0
Harding	6	109	1.6	120	26	469	2.2	520	4.3
Hughes	23	419	6.1	460	56	1,009	4.8	1,121	2.4
Hutchinson	1	18	0.3	20	0	0	0.0	0	0.0
Hyde	2	36	0.5	40	2	36	0.2	40	1.0
Jackson	6	109	1.6	120	24	433	2.1	480	4.0
Jerauld	3	55	0.8	60	0	0	0.0	0	0.0
Jones	20	365	5.3	400	67	1,208	5.8	1,341	3.3
Kingsbury	2	36	0.5	40	1	18	0.1	20	0.5
Lake	0	0	0.0	0	0	0	0.0	0	0
Lincoln	1	18	0.3	20	0	0	0.0	0	0.0
Lyman	46	839	12.2	921	163	2,938	14.1	3,262	3.5
McCook	0	0	0.0	0	0	0	0.0	0	0
McPherson	11	201	2.9	220	12	216	1.0	240	1.1
Marshall	2	36	0.5	40	0	0	0.0	0	0.0
Meade	5	91	1.3	100	15	270	1.3	300	3.0
Mellette	8	146	2.1	160	29	523	2.5	580	3.6
Miner	0	0	0.0	0	0	0	0.0	0	0
Moody	0	0	0.0	0	0	0	0.0	0	0
Perkins	43	784	11.4	861	237	4,272	20.4	4,743	5.4
Potter	7	128	1.9	140	9	162	0.8	180	1.3
Roberts	0	0	0.0	0	0	0	0.0	0	0
Sanborn	1	18	0.3	20	0	0	0.0	0	0.0
Spink	1	18	0.3	20	3	54	0.3	60	3.0
Stanley	40	729	10.6	801	169	3,046	14.6	3,382	4.2
Sully	4	73	1.1	80	3	54	0.3	60	0.7
Tripp	23	419	6.1	460	49	883	4.2	981	2.1
Turner	0	0	0.0	0	0	0	0.0	0	0
Union	0	0	0.0	0	0	0	0.0	0	0
Walworth	10	182	2.6	200	20	360	1.7	400	2.0
Ziebach	5	91	1.3	100	29	523	2.5	580	5.7
Oglala Lakota	0	0	0.0	0	0	0	0.0	0	0
Todd	3	55	0.8	60	16	288	1.4	320	5.3
Unknown	37	675	-	-	128	2,307	-	-	3.4
<b>TOTALS:</b>	<b>415</b>	<b>7,567</b>	<b>100%</b>	<b>7,567</b>	<b>1,288</b>	<b>23,214</b>	<b>100%</b>	<b>23,214</b>	<b>3.07</b>

Last Revised: 6 May 2024

\* Includes unknown county projection values by assuming unknown county values are distributed the same as reported county values. Total values may be different due to rounding.

\*\* Calculation uses "# projected" values without correction for unknown/unreported county values.